

Clemson University Edisto Forage Bull Test

2016 Santa Gertrudis Breeders of Carolinas Field Day



Edisto Research Education Center
Blackville, SC

EFTB History

- Started in 1982
- Dr. Larry Olson - 1982-2011
- Kevin Campbell 2011-2012
- Scott Sell 2012-Present
- Housed at the Edisto REC

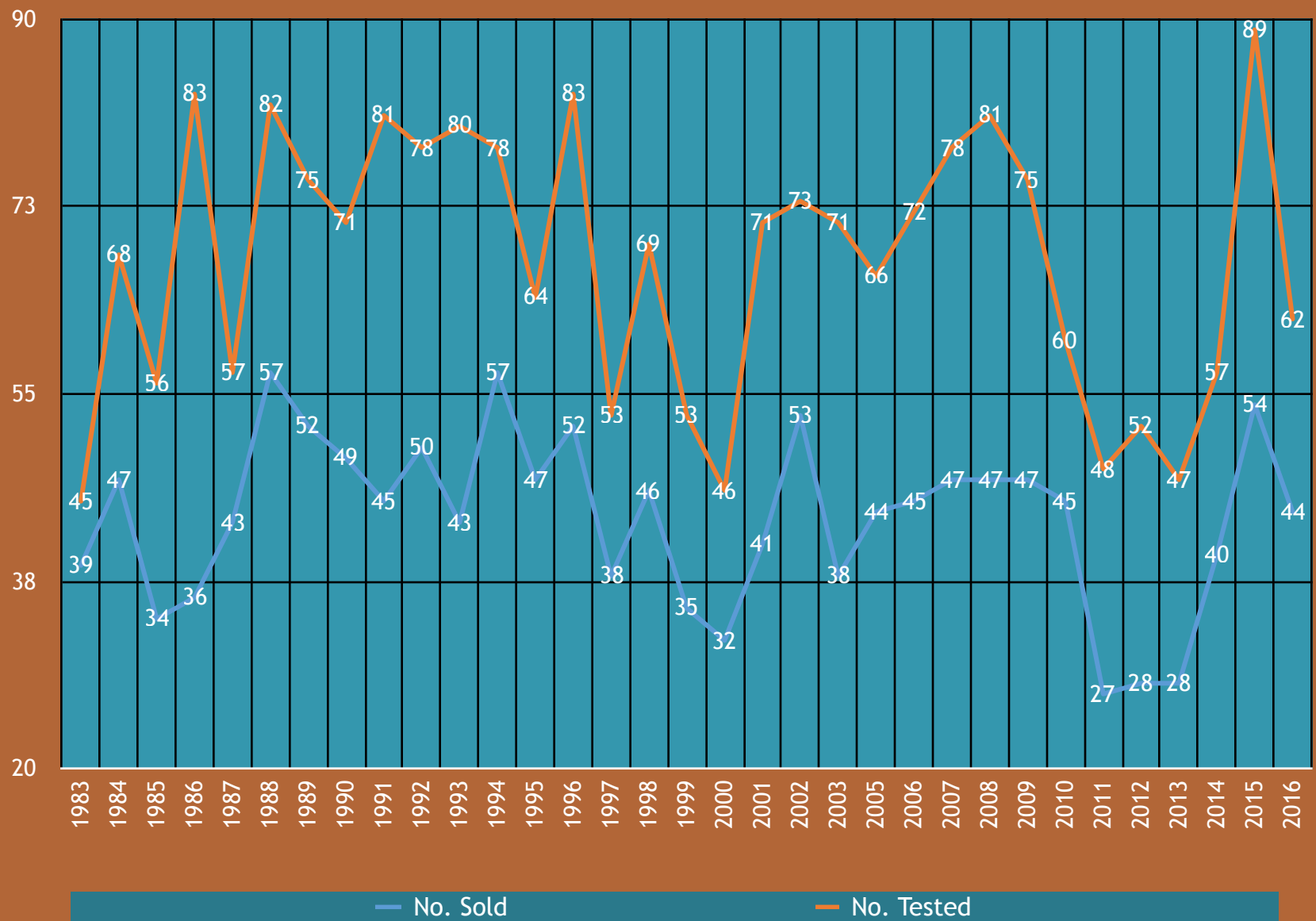
EFTB History 1982-2010

- Started as “Forage Based” grain test hybrid
- Bulls were fed 1-2% of their body weight
- Went out on pasture to free choice grazing at night and when not feeding.
- Was not a true forage test in the purest sense of the word

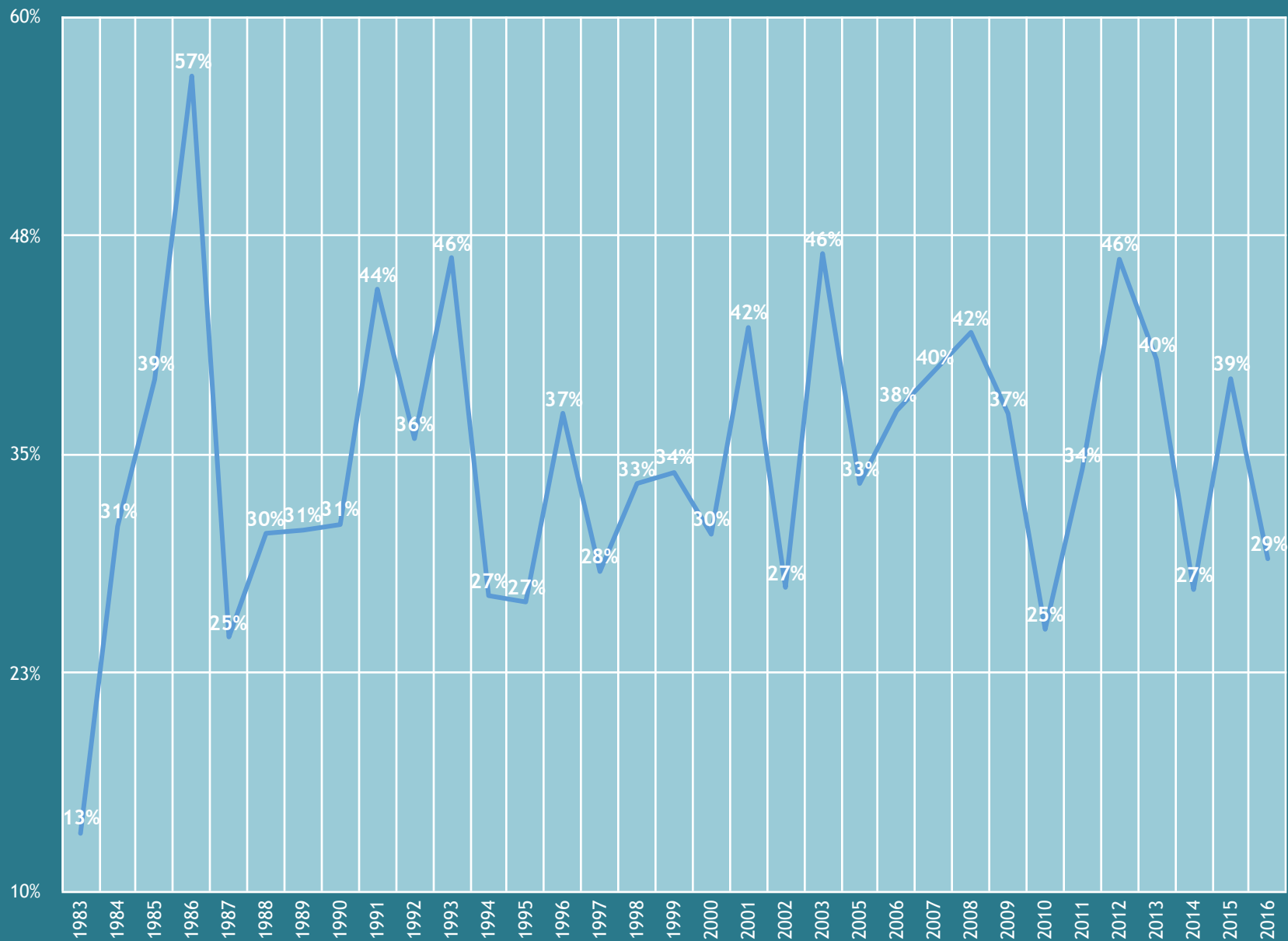
EFBT History 2011-Present

- 168d Testing Period is 100% Forage
- Entire Diet comes form Forage
- A True Forage Bull Test
- 2011-2013 - No grain even after testing period
- 2014 on - Bulls Fed a SH/CGF/Corn Ration @ 1% of BW last 5 Weeks Leading up to the Sale

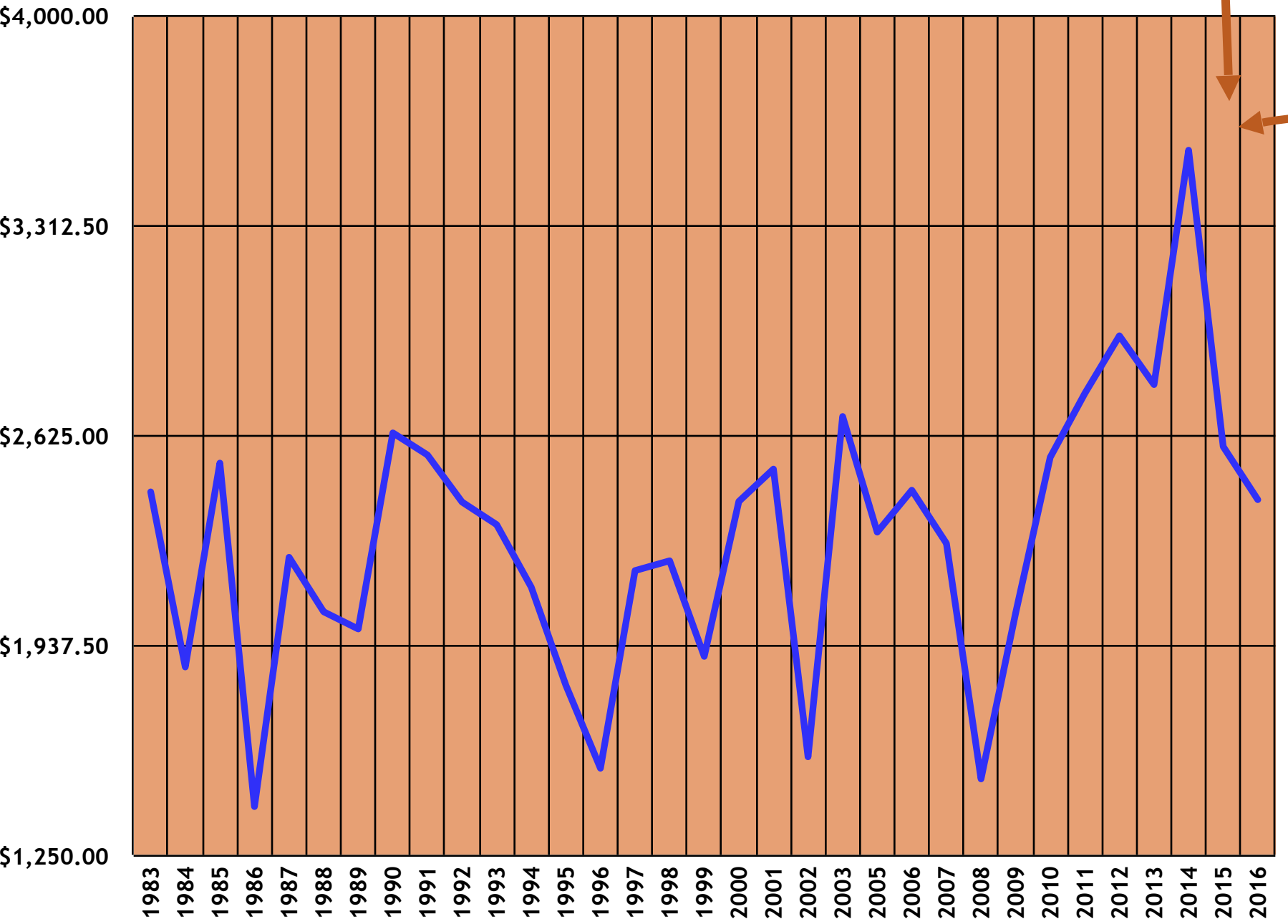
Entry and Sale Numbers 1983-2016



% of On Test Bulls not Selling



Edisto Forage Bull Test
Avg Sale Price 1983 - 2016



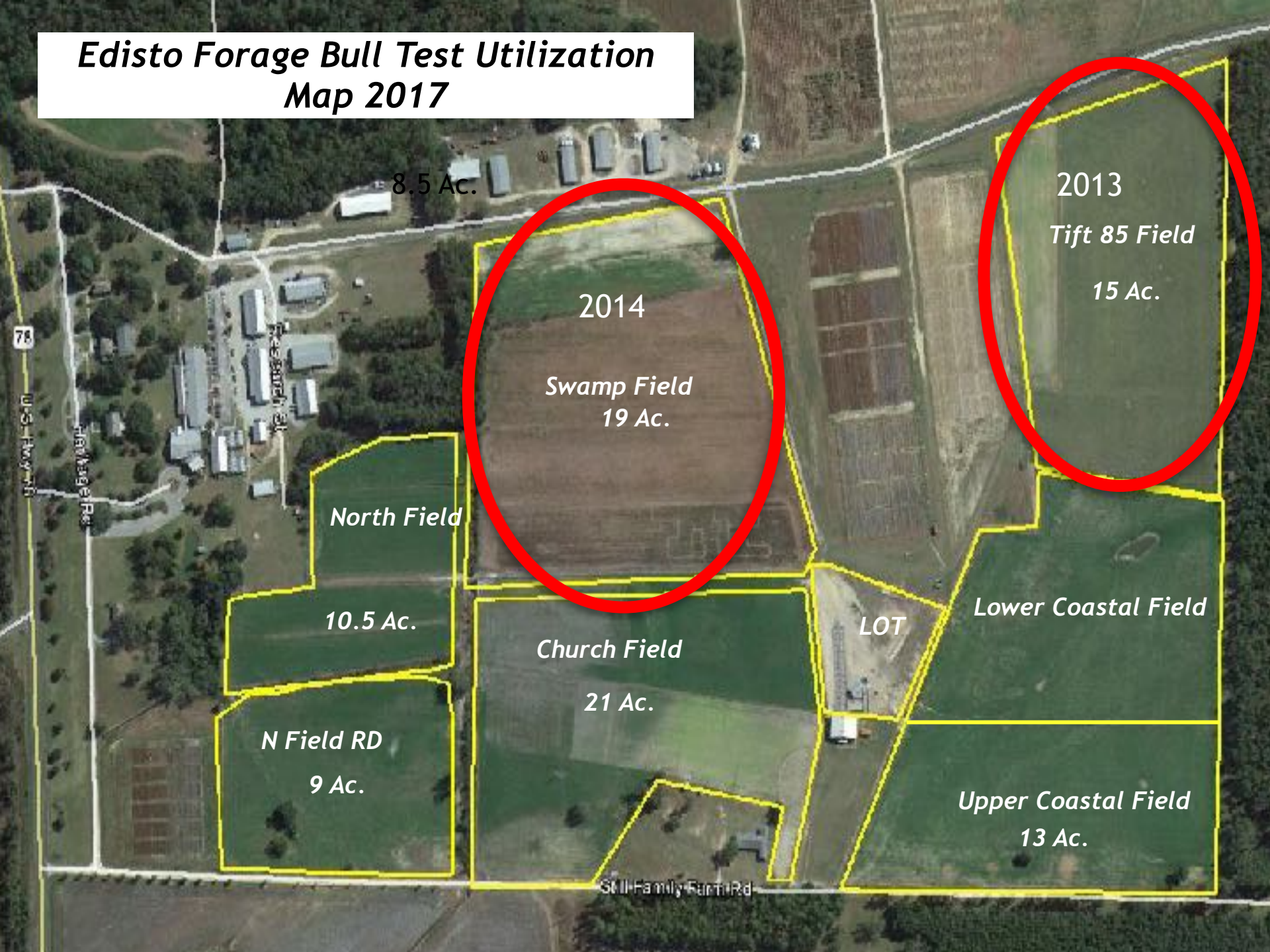
EFTB - By the Numbers

- 33 years
- 2119 - Bulls Tested
- 1403 - Bulls Sold
- **\$3,155,402.88** - Total Sales
- \$2292.57 - 33 yr Average
- **\$4,719,850.15 - 2016 Dollars**

Top 5 All Time High Selling Bulls

<i>Rank</i>	<i>Price</i>	<i>ADJ to 2016</i>	<i>Test</i>	<i>Bull No.</i>	<i>Breed</i>	<i>Consignor</i>
1	\$13,500	\$28,727	1987	5	SG	Sapelo Farms
1	\$13,500	\$24,968	1990	29	SG	Windy Knoll Farm
2	\$8,000	\$19,416	1983	8	SG	Clarendon Plantation
3	\$7,000	\$14,303	1988	13	SG	Windy Knoll Farm
4	\$6,700	\$6,841	2014	20	AN	Lindy Sheppard
5	\$6,600	\$14,827	1985	55	CH	American Polled Charolais

Edisto Forage Bull Test Utilization Map 2017



Plantings and Fertility

- First Week of September

- 1/3 of land planted

- 2 bu Wheat/25 lbs Ryegrass/7 lbs Arrowleaf Clover

- First Week of October

- 1/3 of land planted

- 2 bu Wheat/25 lbs Ryegrass/7 lbs Arrowleaf Clover

Plantings and Fertility

- Last Week of October
 - 1/3 of land planted
 - 35 lbs of Ryegrass
- Mid October
 - September Plantings get 60 units of N as urea - not liquid S25
- Late October
 - Rest of Plantings get 60 units of N as urea

Plantings and fertility Continued

- Mid to Late February
 - All gets 60 units of N
- First week of April
 - Plant Pearl Millet
 - Used to plant cowpeas with it
- First Week in May
 - Plant Pearl Millet
- Mid April - Tift 85 gets chicken litter and then 60 units of N in mid summer

What does it cost?

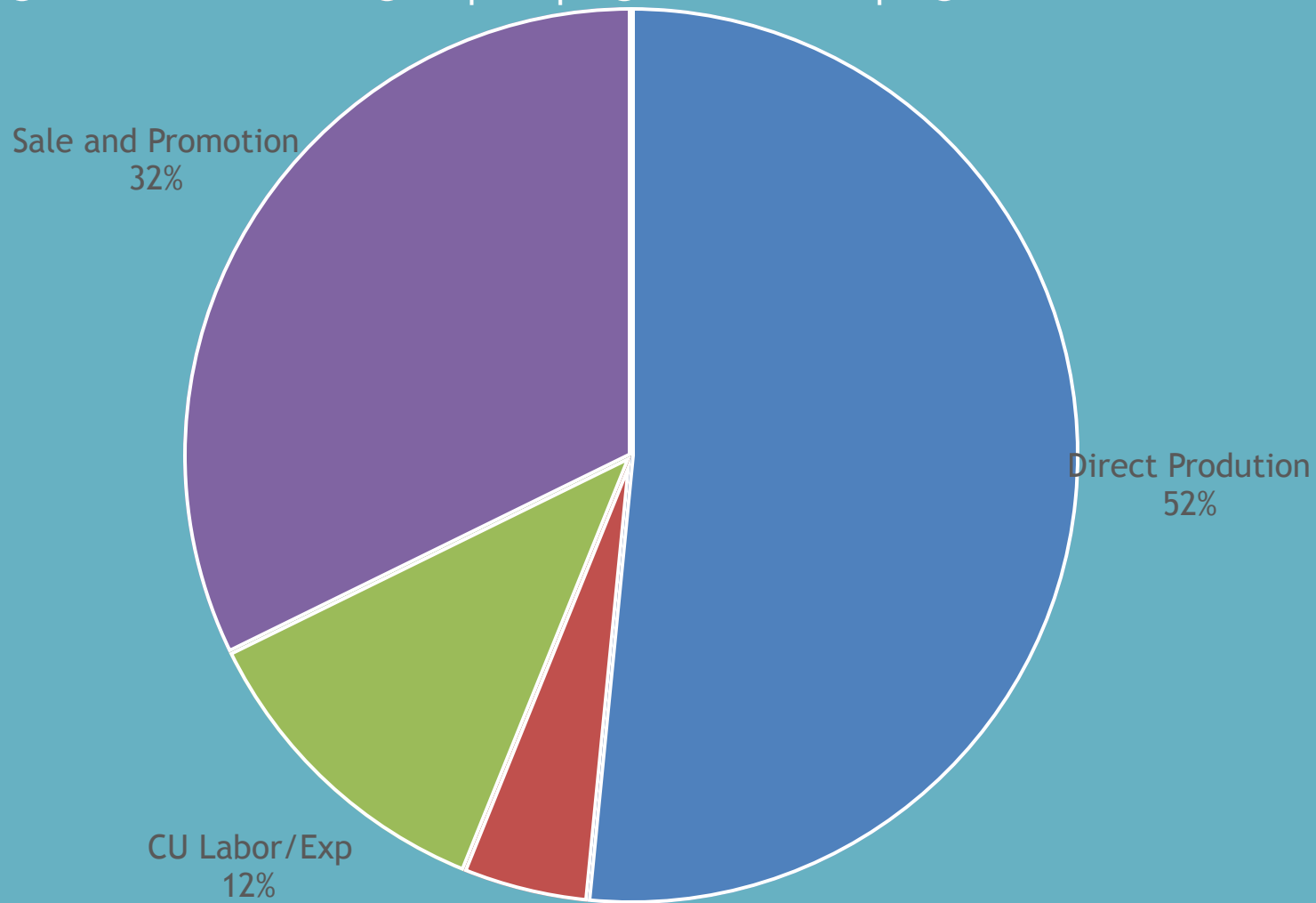
Clemson Fed Test - \$1000 - \$1100 -
In August - Out February - *\$210/Month*

Vs.

Edisto Forage Test - \$750 - \$900
In December - Out in October - *\$90/*
Month

2016 EFBT Expense Breakdown

○ Direct Production ● Cap. Imp ● CU Labor/Exp ● Sale and Promotion



Pen Renovation - Before







06/11/2014 09:45





06/11/2014 09:47









Gallagher APS - Cattlemax

- Total Herd Management
- Every Animal Now has a Unique Electronic ID Tag
- Tag is read each and every time animal enters a working facility
- Weight and Health Data is recorded
- Data Accessible by Administrators and Every employee in the management chain

EID TAG



EID TAG





Gallagher APS System



Gallagher APS System

Handheld Reader - Redundatcy





Logged in as Scott Ball

[My Account](#) | [Logout](#) | [Help](#)



DASHBOARD

CATTLE

PASTURES

CONTACTS

CALENDAR

FINANCIAL

REPORTS

MORE...

Search cattle by any ID

CattleMax

Record Areas



Breeding



Pregnancy Check



Calving



Weaning



Yearling



Cattle



Purchases



Sales

Quick Links

Animal...

- [New Animal](#)
- [New Animal Note](#)

Contact...

- [New Contact](#)
- [New Contact Note](#)

Pasture...

- [New Pasture](#)
- [New Pasture Note](#)

More...

- [New Expense](#)
- [New Income](#)

Active Cattle

Animals by Type



Upcoming Events

No upcoming events.

Upcoming Calving

Key Dates 2016 - 2017

- ~~Entry Deadline for 2017 Test - November 1, 2016~~
- Delivery Date for 2017 Test - December 6, 2016
- 168d Off Test - June 6, 2017
- Sale - October 14, 2017

Contact and More Information

<http://www.clemson.edu/extension/bulltest/edisto/>

Scott Sell

912-682-9590

gsell@clemson.edu